

ALL CITIES IN

Daniele Guglielmino

Sustainability Specialist – LEED AP

27 settembre 2017



Unione Europea



A low-angle, upward-looking perspective of several modern skyscrapers. The buildings are characterized by their glass and steel facades, which reflect the sky and each other. The perspective creates a sense of height and scale, with the buildings converging towards the top of the frame. The sky is a pale, clear blue. The text "ALL CITIES IN" is superimposed in the center of the image.

ALL CITIES IN

STRATEGIC IMPERATIVES

1. Expand the green building marketplace
2. Expand sustainable, healthy and resilient **communities, cities**, and cultures
3. Calibrate and communicate the full benefit of green building, **communities, cities**, and cultures
4. Ensure viability through organizational and community excellence.



LEED for Cities



Action-Oriented, Measurable Green Performance.

Arc helps you measure performance, make improvements and benchmark against other projects.

[Discover Arc](#)



LEED for Cities:



- ✓ Supports continuous progress toward a better city & a higher quality of life
- ✓ Helps a city set performance goals & implement strategies to reach those goals
- ✓ Tracks performance data to measure progress towards those goals
- ✓ Leverages a wide range of rating systems, standards, protocols & guidelines

THE BENEFITS:



- ▶ Demonstrate your city's commitment to sustainability, human health, economic prosperity & quality of life
- ▶ Educate residents & visitors on the importance of sustainability measures
- ▶ Support performance reporting and achievements at the city-scale
- ▶ Provide shared accessibility and continuity of data across teams and over time

THE BENEFITS:



- ▶ Meet your city's CO2 emissions reduction targets & support your country in meeting its climate action goals
- ▶ Communicate your city's sustainability and quality of life performance consistently
- ▶ Identify policies that will reduce the impact & improve the performance of your city over time

FLEXIBLE & SCALABLE PLATFORM:



- ▶ The performance score uses 14 metrics related to energy & carbon, water, waste, transportation, education, prosperity, equitability, health & safety
- ▶ Arc can also measure data on 250+ quantitative & qualitative parameters, for more detailed evaluation

- City provides data across 5 categories to generate score:

- Energy
- Water
- Waste
- Transportation
- Human Experience

SCORING 1-100



PERFORMANCE, SCORED.

Energy:

out of 33

Water:

out of 15

Waste:

out of 8

Transportation:

out of 14

Human Experience:

out of 20

Base score: out of 10

Improve performance and certify to LEED for Cities:



Step 1: Register
your city in arc



Step 2: Pre-certify



Step 3: Share data
to receive a score



Step 4: GBCI review
of data



Step 5: Certify to
LEED for Cities

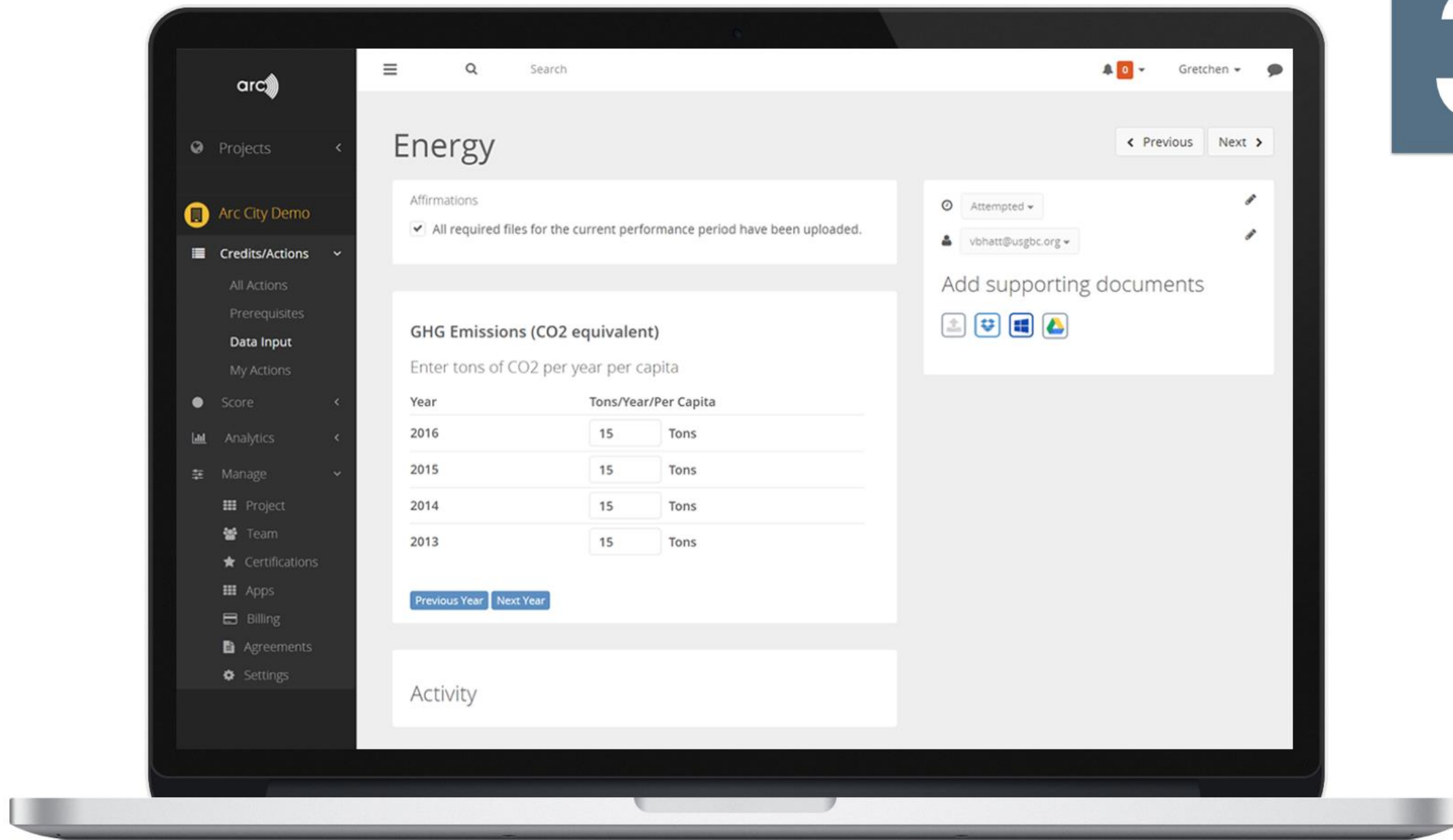
buildings communities cities

a single platform

All buildings, communities, cities; all rating systems, standards, protocols; all data, technology, people; all certifications all in one place. arc complements LEED, other green building rating systems, and even buildings not pursuing certification. It's yours at your fingertips.

PRECERTIFY:

- Commit to track data & measure progress
- Identify city boundaries, governance, and stakeholders
- Share your plans, goals, and strategies for sustainability and quality of life
- Visit usgbc.org/cityperformance





5



80+
PLATINUM



60+
GOLD



50+
SILVER

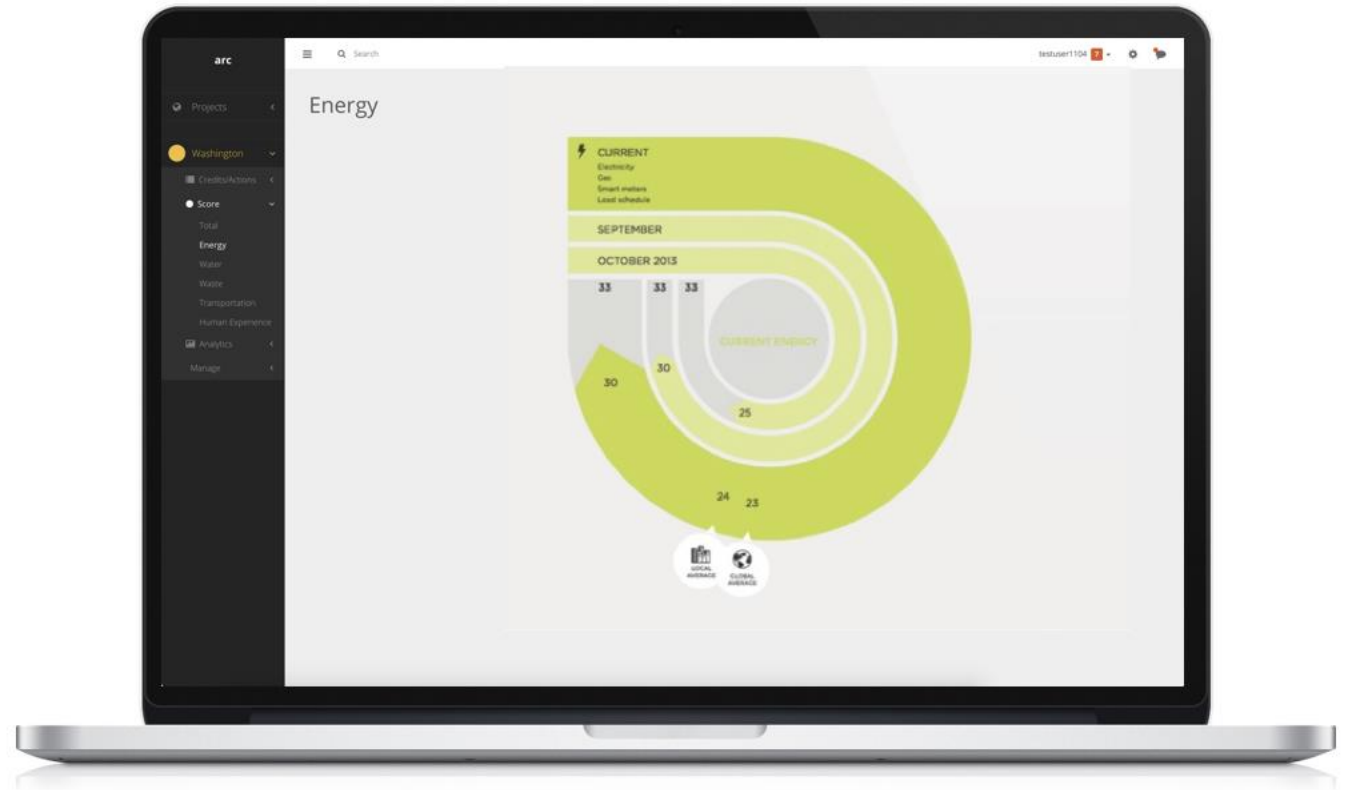


40+
CERTIFIED

ENERGY

- GHG Emissions (CO₂ equivalent) - Tons/Year/Per Capita

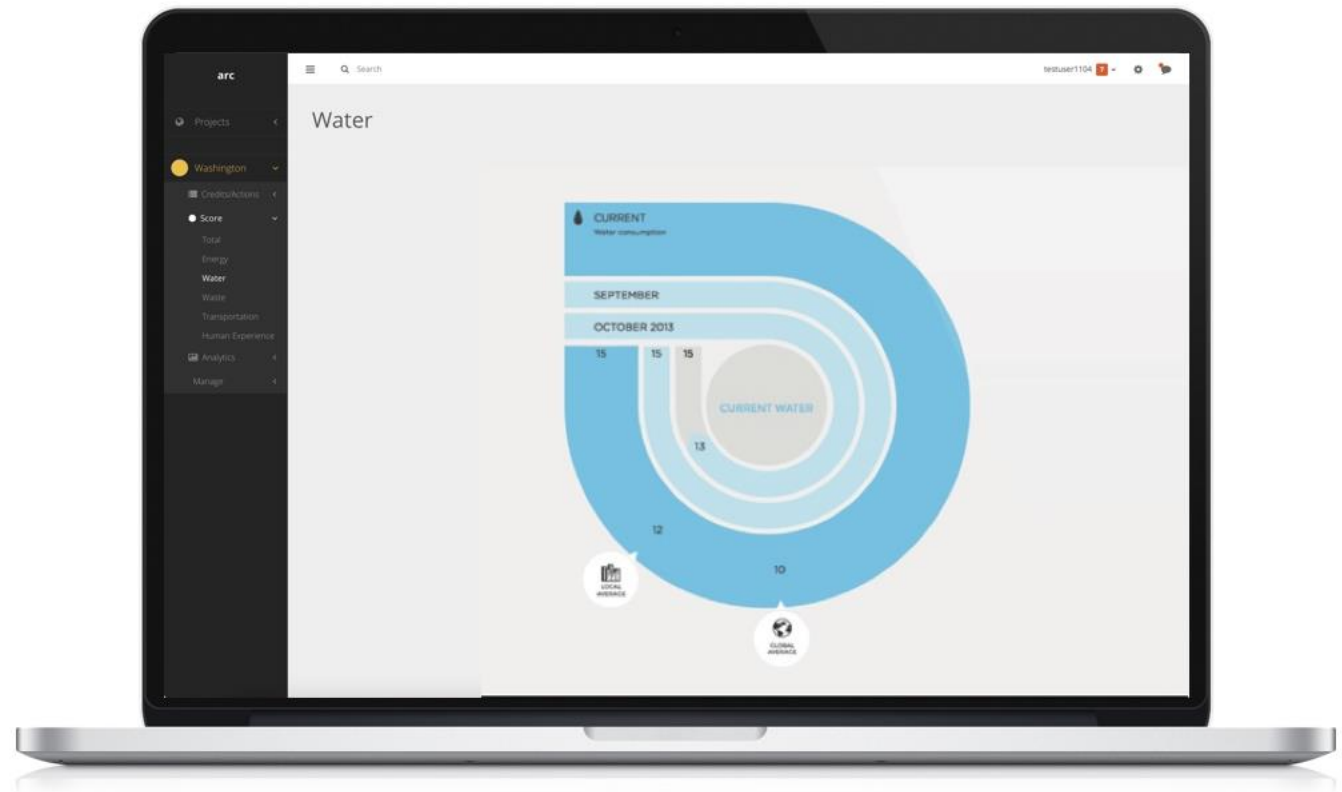
ENERGY SCORE: 0-33



WATER

- Water Consumption - Amount/Year/Person

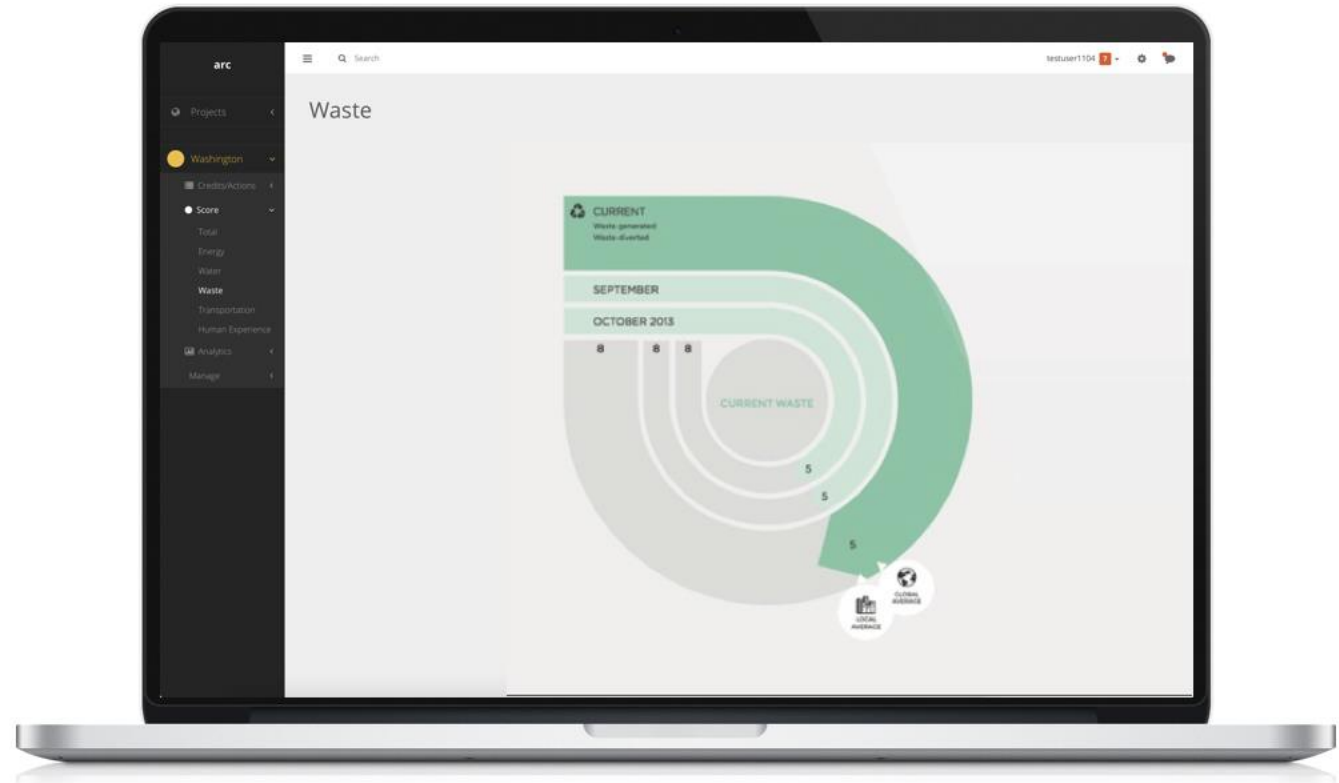
WATER SCORE: 0-15



WASTE

- Municipal solid waste generation intensity (Weight/Year/Person)
- Municipal solid waste diversion rate from landfill (%)

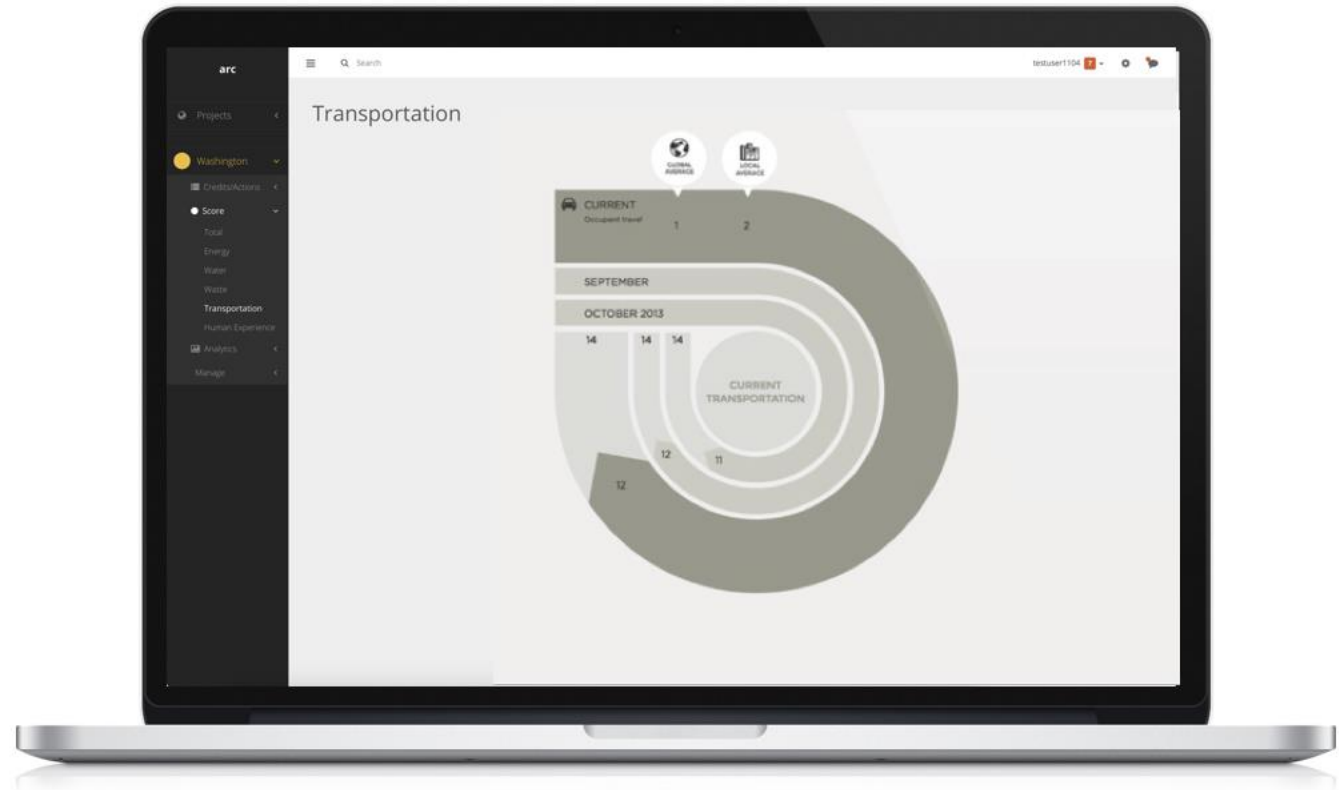
WASTE SCORE: 0-8



TRANSPORTATION

- Distance traveled in individual vehicles daily

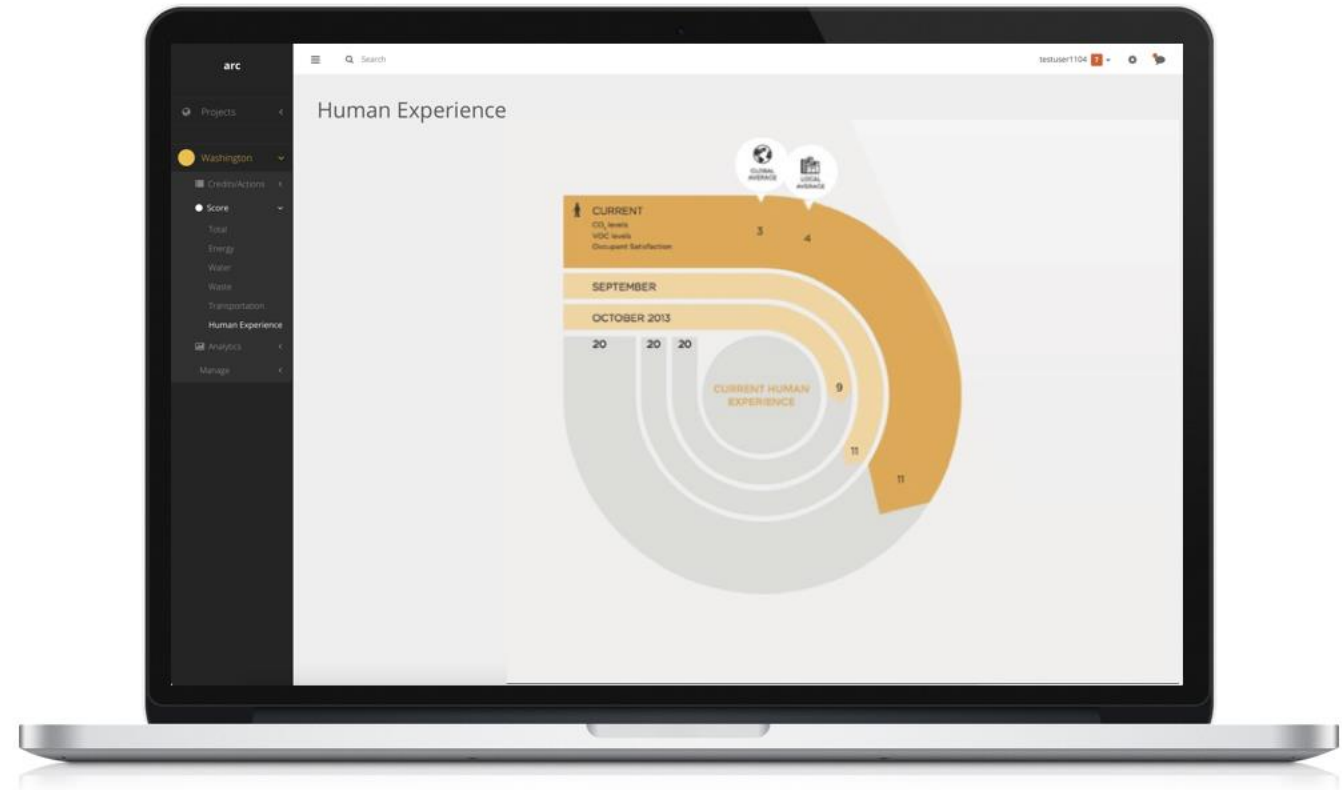
TRANSPORTATION SCORE: 0-14



HUMAN EXPERIENCE

- Population with (at least) High School Degree, Unit: % of Population 25 Years And Over
- Population with (at least) Bachelor's Degree, Unit: % of Population 25 Years And Over
- Median gross rent as % of household income
- Gini coefficient (for income distribution)
- Median household income (USD per year)
- Unemployment rate (%)
- Median air quality index
- Air quality days unhealthy for sensitive groups (Days/Year)
- Violent Crime (per capita per year)

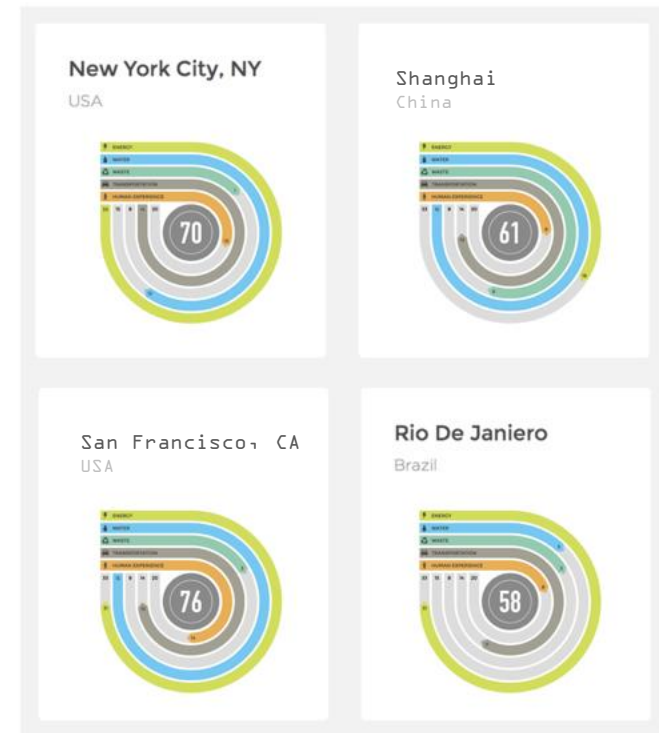
HUMAN EXPERIENCE SCORE: 0-20



OPEN & INTEGRATED

STRATEGIES

LEED, PEER, SITES, WELL,
EDGE, GRESB, Parksmart, City
Protocol Society, STAR,
Bioregional, Climate Positive,
ICLEI, Carbon Disclosure
Project, China EcoCity,
ISO37120 ...



My cities

+ Add City

ID	NAME	TYPE	PROJECT ADMIN	STATUS
1000137628	San Francisco, CA	City		Active
1000537618	New York City, NY	City		Active
1000137518	Madison, WI	City		Active
1000137618	Philadelphia, PA	City		Active
1000137618	Chicago, IL	City		Active
1000137618	Oakland, CA	City		Active
1000137618	San Diego, CA	City		Active
1000137618	Portland, OR	City		Active
1000137618	Seattle, WA	City		Active
1000137618	Newark, NJ	City		Active
1000137618	Boston, MA	City		Active
1000137618	Milwaukee, WI	City		Active
1000137618	Minneapolis, MN	City		Active
1000137618	Cambridge, MA	City		Active
1000137618	San Jose, CA	City		Active
1000137618	Washington, DC	City		Active
1000137618	Buffalo, NY	City		Active
1000137618	Long Beach, CA	City		Active
1000137618	Los Angeles, CA	City		Active
1000137618	Berkeley, CA	City		Active
1000137618	Honolulu, HI	City		Active
1000137618	New Orleans, LA	City		Active
1000137618	Denver, CO	City		Active
1000137618	Albany, NY	City		Active

RESOURCES

- arcskoru.com
- contact@arcskoru.com
- LEED for Cities requirements: usgbc.org/cityperformance
- Guide to LEED Certification: usgbc.org/cert-guide
- Arc Playlist on USGBC's YouTube Channel: youtube.com/usgbc
- Pricing: usgbc.org/cert-guide/fees#cities



LET'S GET STARTED!